

Tributary 230 kV Electric Transmission Project Spotsylvania County, Virginia



Introducing our new interactive mapping tool

Your key to finding the latest project information and sharing your feedback with Dominion Energy.

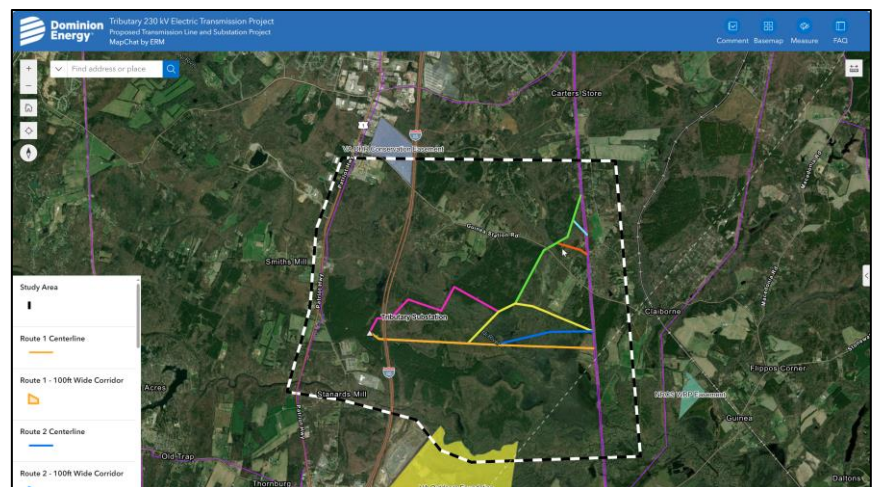


Use the interactive map to explore and comment on proposed project routes and participate firsthand in the routing process at your convenience.

By using the tool, you can:

- Leave a comment for our team
- Change the base map/background for easier viewing
- Measure distances
- Toggle on/off layers to view environmental features, parcel boundaries, and more
- View current and previous versions of routes

- Provide feedback to our team with comments about the locations that matter to you.
- For example, you can add details about natural or historic resources in your community or more information related to your specific property.



Comment Topic*

Which of these categories does your topic pertain to?

<input type="checkbox"/> Construction	<input type="checkbox"/> Grid Reliability	<input type="checkbox"/> Health and Safety
<input type="checkbox"/> Visual Impacts	<input type="checkbox"/> Environmental Impacts	<input type="checkbox"/> Job Opportunities
<input type="checkbox"/> Routing		
<input type="checkbox"/> Other		

Comments*



Use your iPhone camera or the QR reader app on other smartphones to access the mapping website directly.

For more information, visit our website
DominionEnergy.com/tributary.
Or contact us
email: powerline@dominionenergy.com
phone: 888-291-0190

