

Welcome!

The virtual community meeting
will begin shortly!



Virtual Community Meeting



Park Center 230 kV Electric Transmission Line and Substation Project Aug. 2, 2022

Thank you for joining us!

Agenda

- Meet the Team
- Public Engagement
- Project Overview:
Need and Solution
- SCC Application
- Timeline
- Q&A



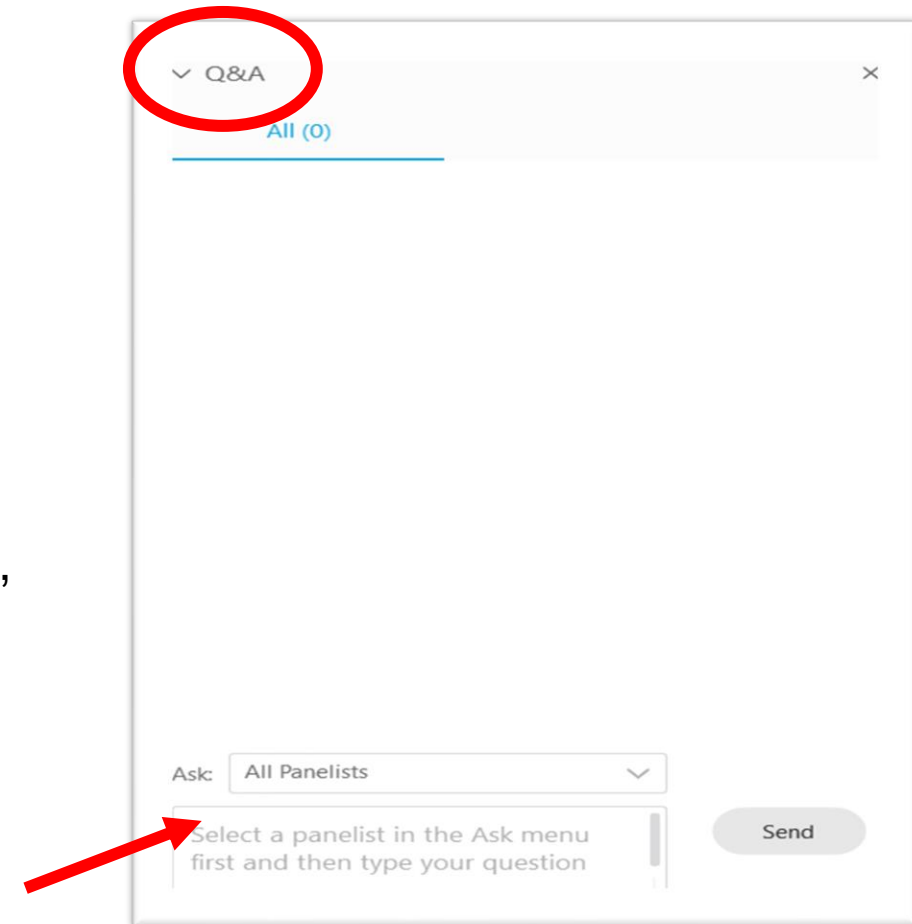
About Webex Events

- Your microphone will remain muted and video off throughout the presentation.
- This meeting will be recorded and posted on our website for those who are unable to attend.
- If you are having audio issues, please be sure you have selected “Use Computer Audio”.

Submitting Questions

- Submit questions through the Q&A at any time, select 'All Panelists'.
- Questions will not be answered until we reach the Q&A session at the end of the presentation.
- If you have a specific question and would like us to follow up with you after the meeting, include your name, address, and preferred method of contact.

Thank you for your patience as we try to make this virtual meeting as engaging as possible!



Project Team



Jerry
Project Manager



Sherrill
Engineering



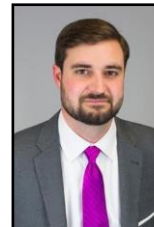
Ken
Routing



Craig
Permitting



James
Environmental

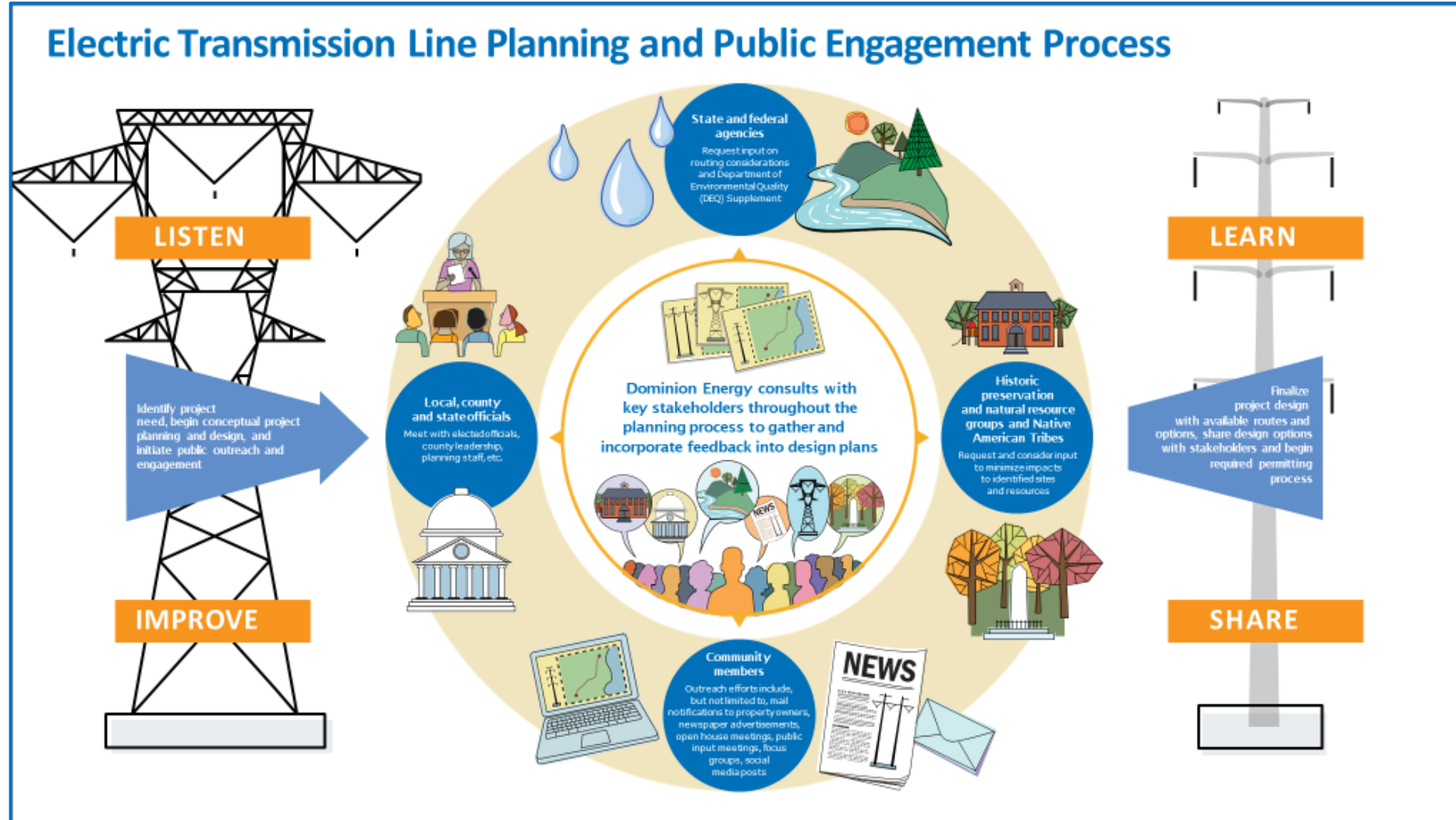


Brendon
Moderator

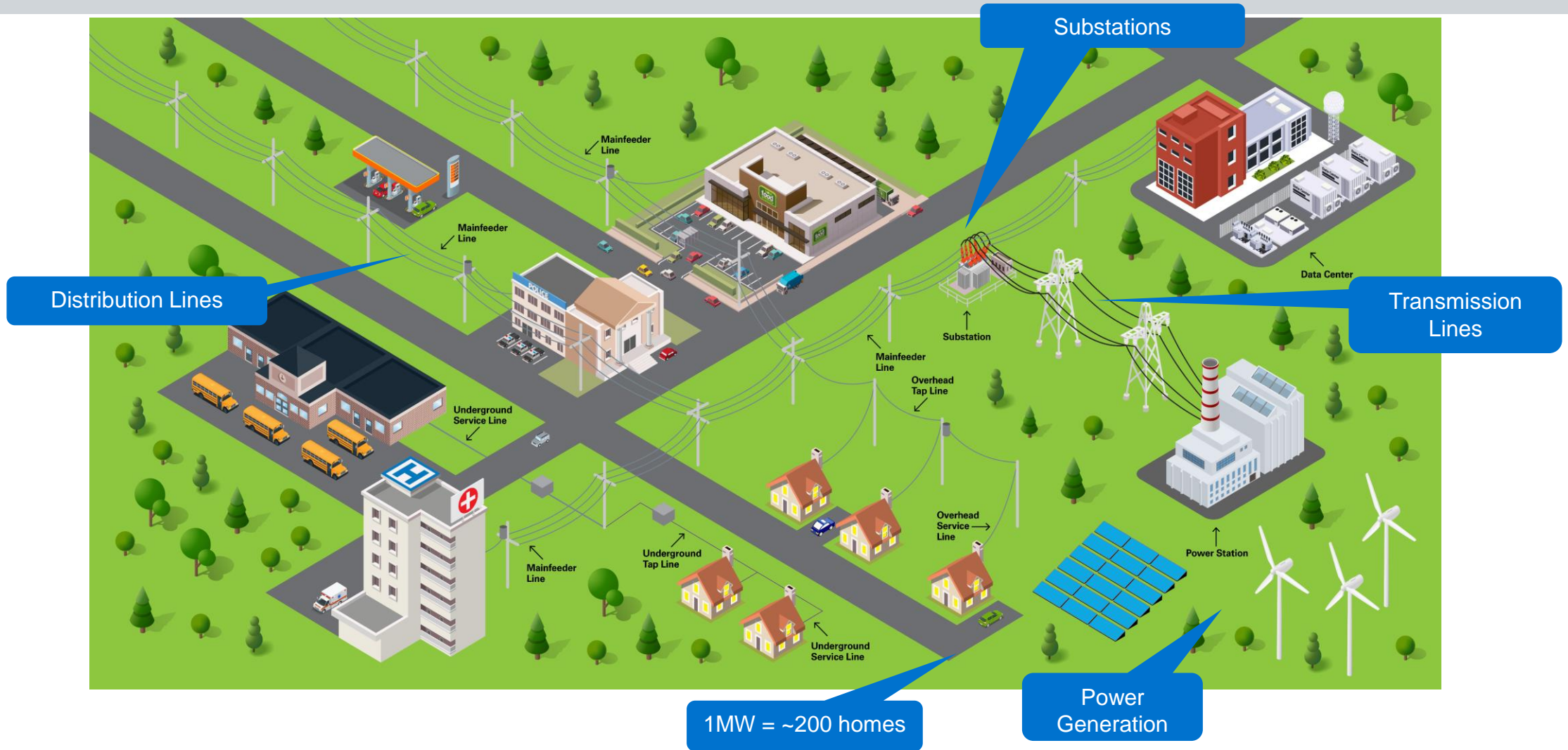


Roxana
Host/Communications

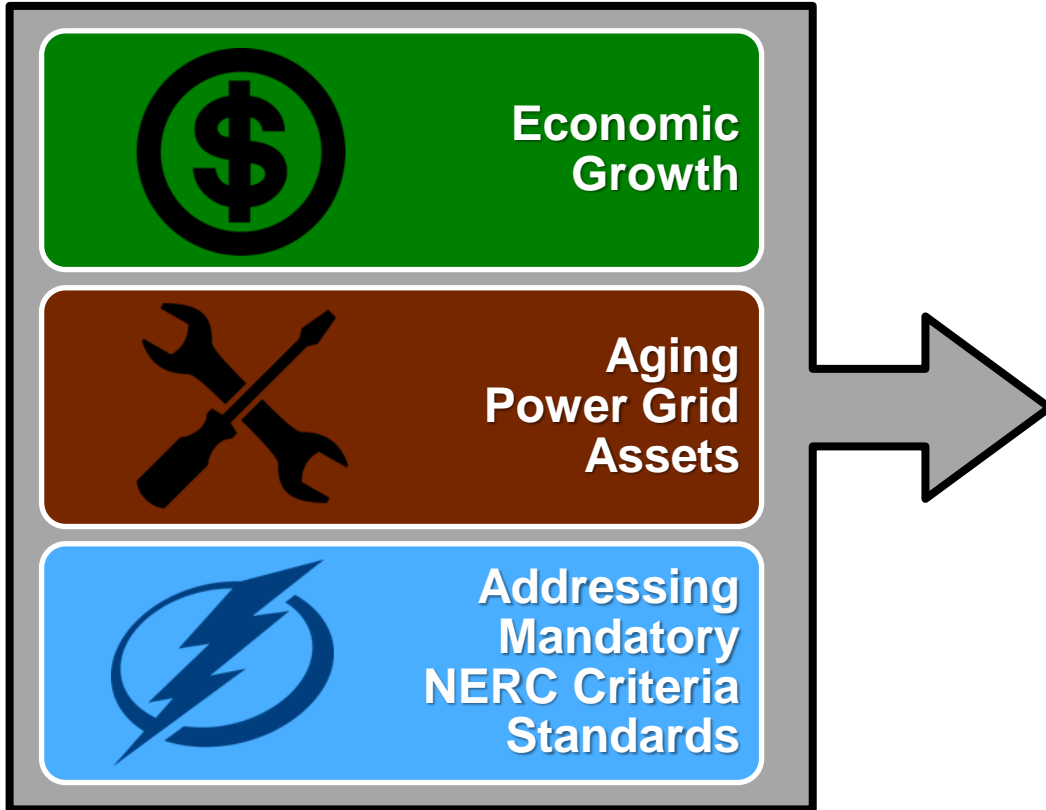
Public Engagement Process



The Grid and Obligation to Serve



Forces Driving Infrastructure Need

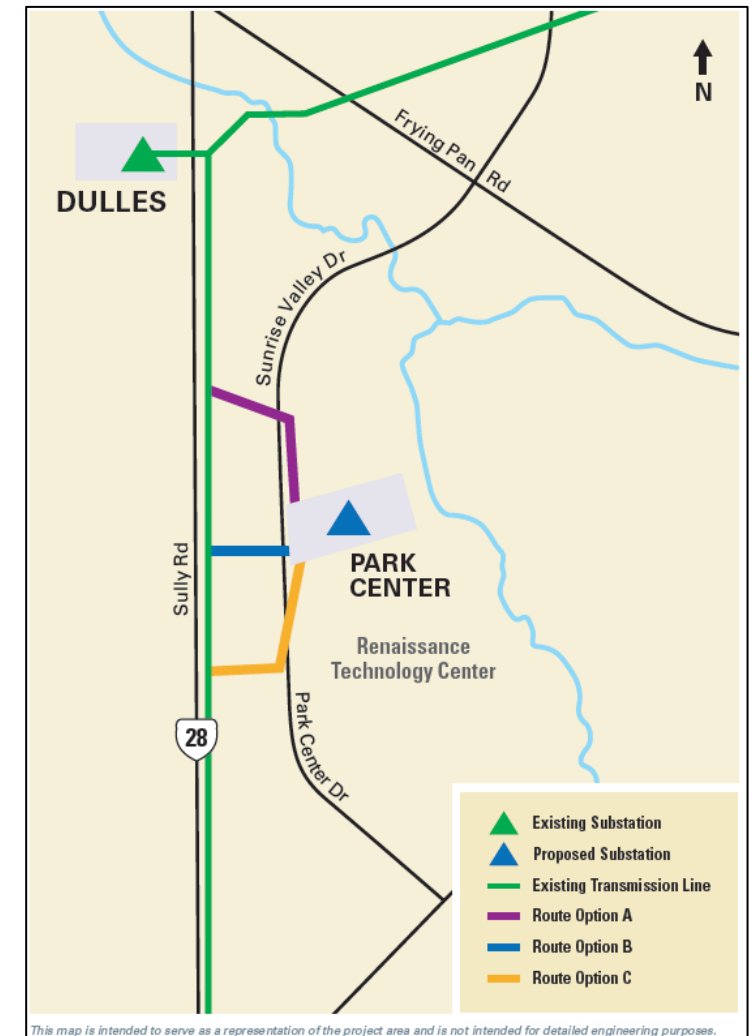


Project Need & Solution

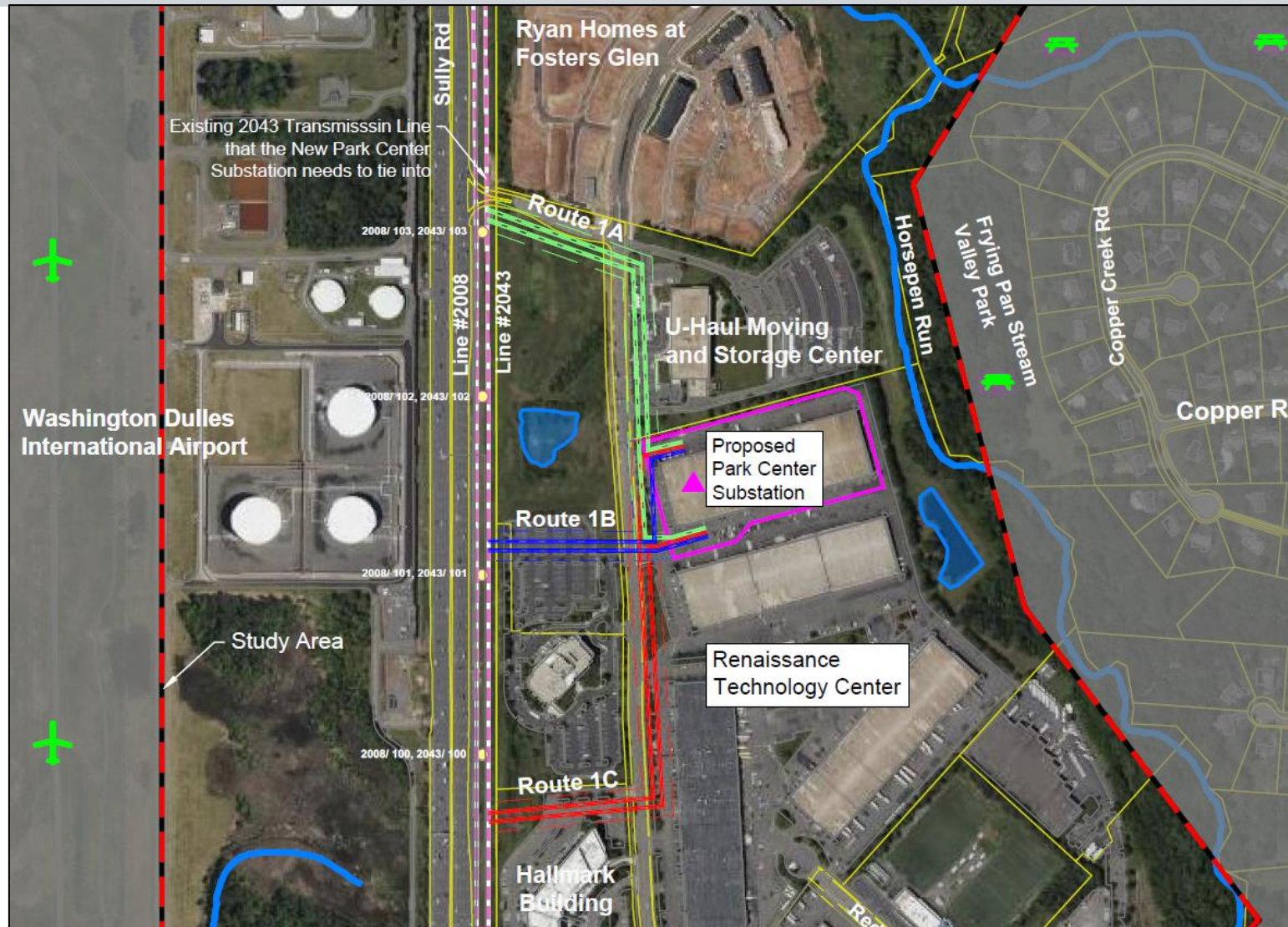
New electric infrastructure is necessary due to data center load growth in the area. This project will help strengthen the bulk electric grid and maintain reliable service for the communities we serve.

Park Center Substation will be located on data center property. New 230 kilovolt (kV) electric transmission lines will be needed to connect the Park Center Substation to an existing transmission line just west of the substation.

The new substation and electric transmission lines will be located in Fairfax County, Virginia, east of the Dulles Airport.



Proposed Substation Location



Structure Examples



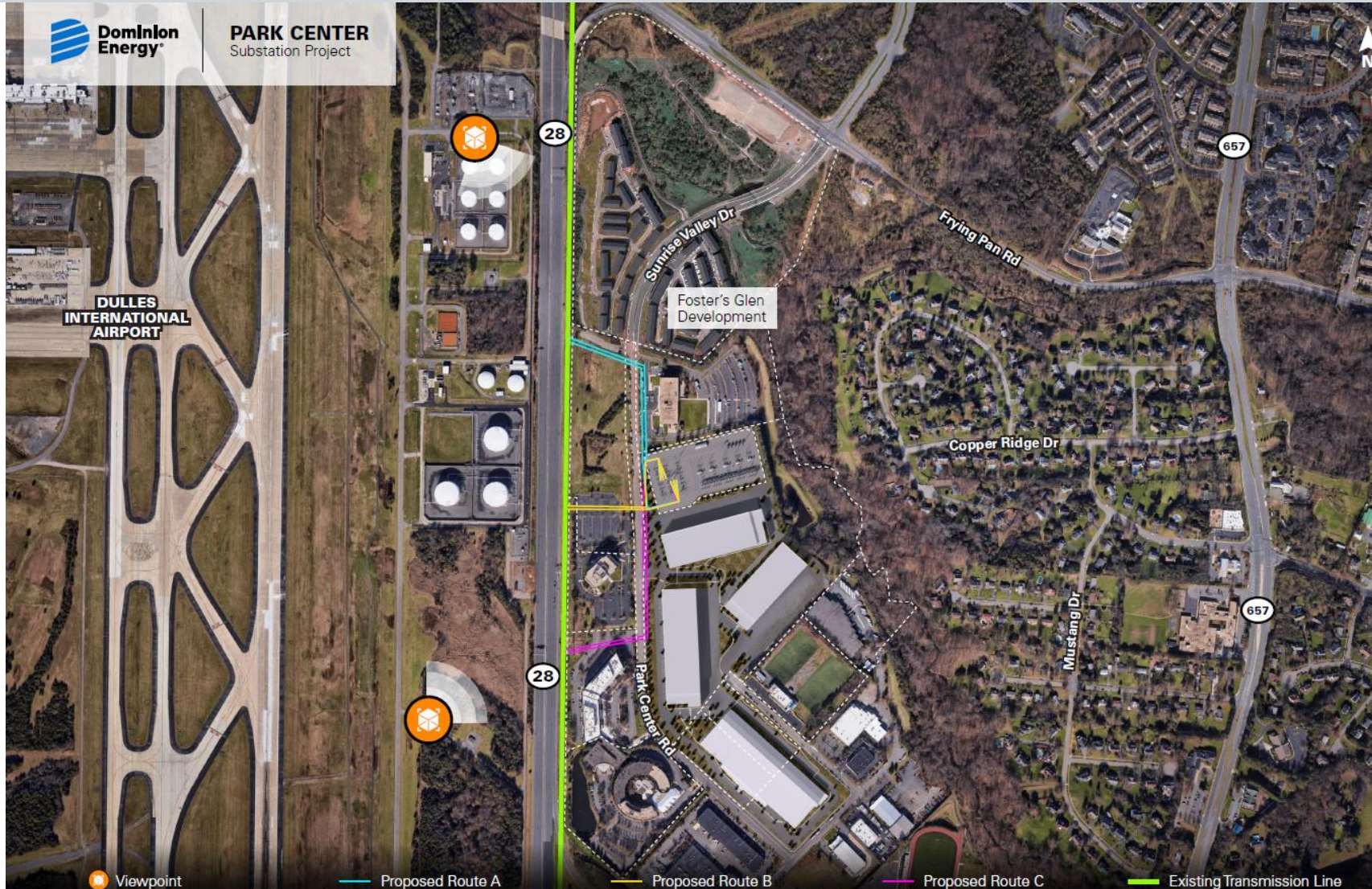
Examples of electric transmission double-circuit monopole structures. Not project specific.

Foundational Principles

- Process always begins with review of existing rights of way
- Respect the land use of the property owners
- Co-locate with other infrastructure, where appropriate
- Stay close to property boundaries
- Minimize impact on private property, and environmental, historic, cultural and scenic resources



Photo Renderings



Rendering – Looking Northeast, Existing



Rendering – Looking Northeast, Route A



PROPOSED CONDITIONS Looking Northeast

PROPOSED ROUTE A

Visualization is for discussion purposes only. Final design is subject to change pending public, engineering, and regulatory review.

Rendering – Looking Northeast, Route B



Rendering – Looking Northeast, Route C



PROPOSED CONDITIONS Looking Northeast

PROPOSED ROUTE C

Visualization is for discussion purposes only. Final design is subject to change pending public, engineering, and regulatory review.

Rendering – Looking Southeast, Existing



Rendering – Looking Southeast, Route A



Rendering – Looking Southeast, Route B



Rendering – Looking Southeast, Route C



PARK CENTER
Substation Project

PROPOSED CONDITIONS Looking Southeast

PROPOSED ROUTE C

Visualization is for discussion purposes only. Final design is subject to change pending public, engineering, and regulatory review.

- **Virginia State Corporation Commission (SCC):** Certificate of Public Convenience and Necessity
 - Alternatives Analysis
 - Routing Study
 - Department of Environmental Quality Supplement and coordinated review
- **Other Agency Review**
 - Department of Environmental Quality (DEQ)
 - Virginia Department of Transportation (VDOT)
 - Federal Aviation Administration (FAA)
- **Local Permitting Requirements**
 - Substation on data center property/part of developer's site plans

Transmission Line Planning and Public Engagement Process

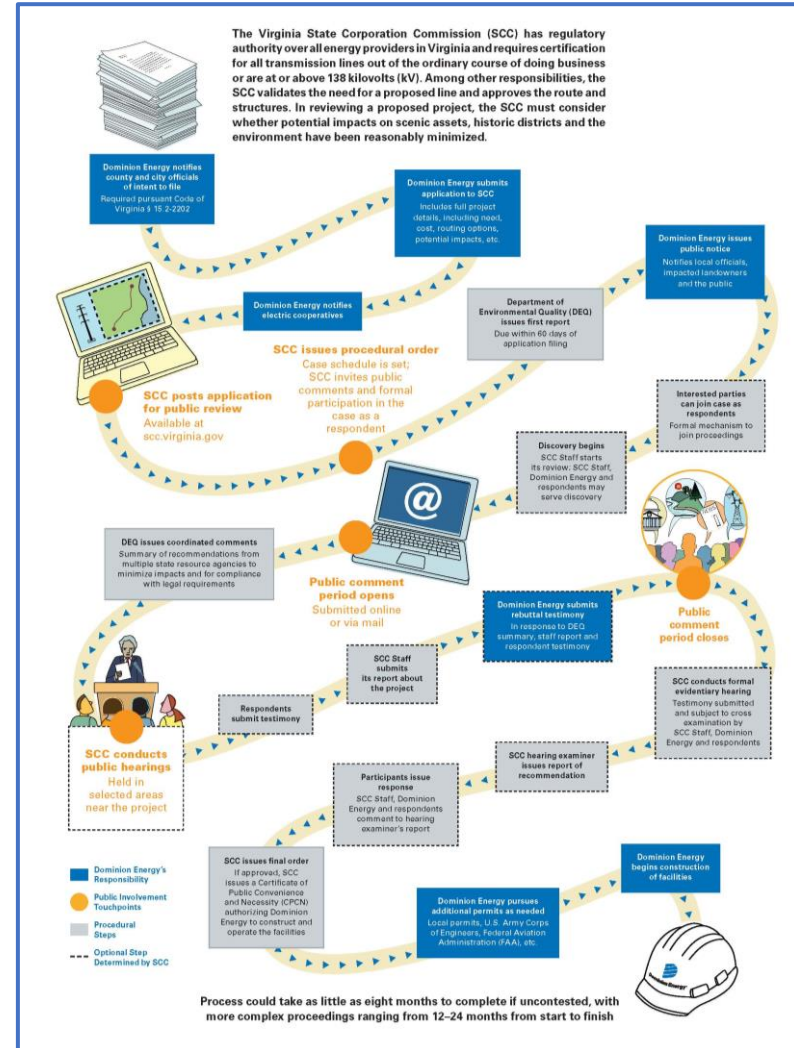
SCC Application



Opportunities for public involvement throughout the process, including public hearings



Process could take as little as eight months to complete if uncontested, with more complex proceedings ranging from 12–24 months from start to finish





July – September 2022 – Initial Public Outreach



August 2022 – Virtual Community Meeting



Early Fall 2022 – Submit SCC Application



Early Summer 2023 – Anticipated SCC Decision



Q2 2024 – Estimated Construction Start

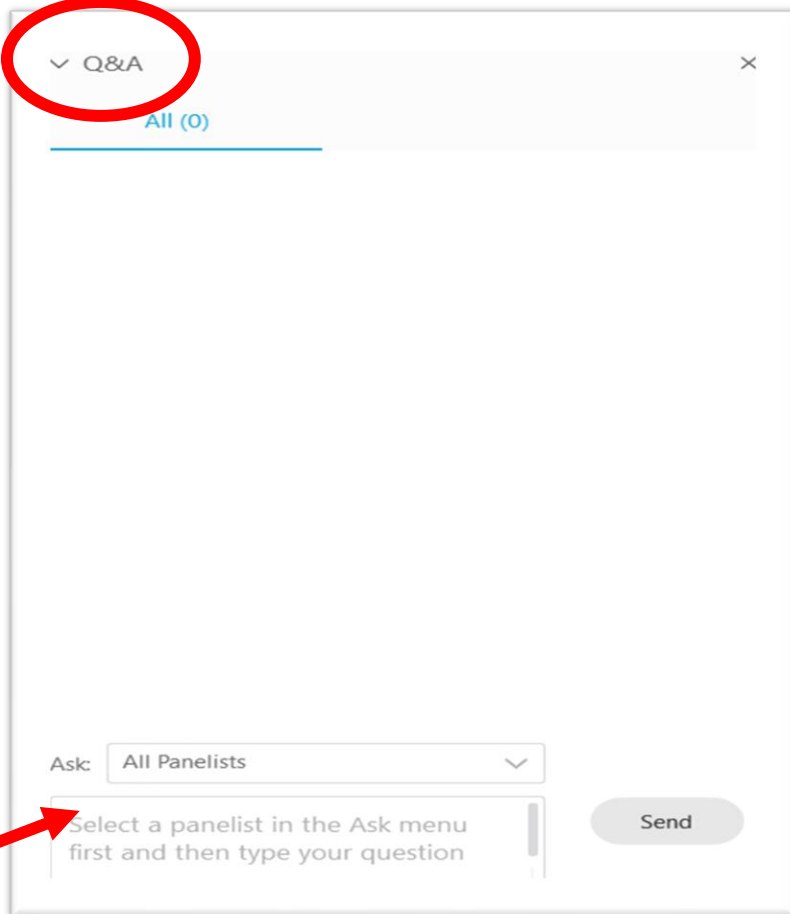


Q2 2025 – Target Project Completion Date

This schedule is subject to change based on permits, weather, etc.

- Submit questions through the Q&A at any time, select 'All Panelists'.
- If you have a specific question and would like us to follow up with you after the meeting, include your name and preferred method of contact.

Thank you for your patience as we try to make this virtual meeting as engaging as possible!



Q&A

All (0)

Ask: All Panelists

Select a panelist in the Ask menu first and then type your question

Send

Thank You

- Keeping you informed on project updates
- For questions throughout the project, including construction, send an email to powerline@dominionenergy.com or call **888-291-0190**
- This meeting will be recorded and posted on our website for those who were unable to attend
- For more information, please visit: [DominionEnergy.com/parkcenter](https://www.dominionenergy.com/parkcenter)



Thank you for joining!