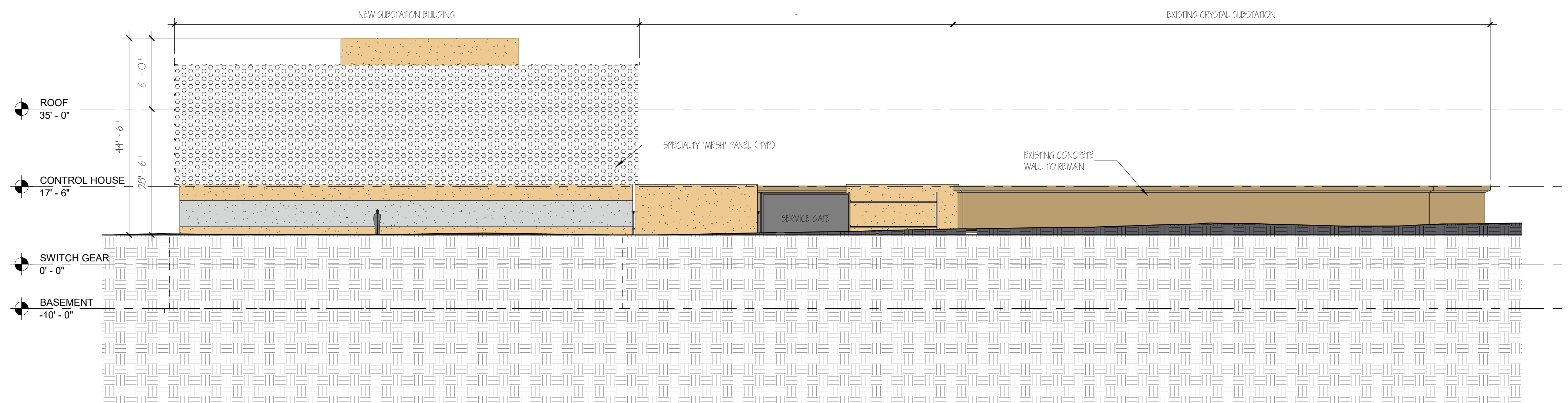


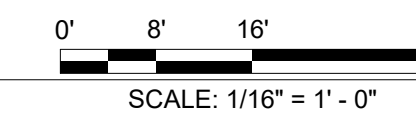
2 NORTH ELEVATION / SERVICE ENTRANCE

Scale: 1/16" = 1'-0"



1 HAYES ST. / 18TH STREET SOUTH ELEVATION

Scale: 1/16" = 1'-0"



CRYSTAL SUBSTATION - EXPANSION & MODERNIZATION
CONCEPT ELEVATIONS

